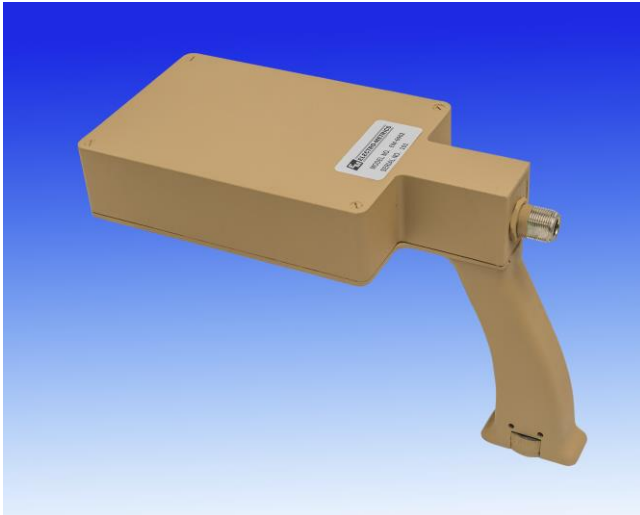


EM-6902 | Antenna, Magnetic Field



Description

Electro-Metrics EM-6902 Magnetic Field Antenna is designed to obtain magnetic field measurements from 100 kHz to 300 MHz. The antenna is ruggedized and made to be shock and weatherproof. It has a handle at its base for convenience in use as a handheld device.

This antenna can only be used as a receive antenna. It can be used with any 50 Ω instrument since it is designed and calibrated for use in a 50 Ω system.

Applications

Electro-Metrics EM-6902 Magnetic Field Antenna can be used as a magnetic field antenna. It can also be used for tracking the source of a signal for a wide range of frequencies.

Specifications

Electrical

Frequency Range: 100 kHz – 300 MHz

Impedance: Calibrated for use into 50 Ω

Outer Connector: Type “N” (female) connector

Mechanical

Height: 1.65” (without handle); 6.25” (with handle)

Length: 9.25”

Width: 4.25”

Weight: 1.5 lbs

EM-6902 Magnetic Field Antenna
100 kHz – 300 MHz
DATA SHEET

Frequency (MHz)	K	Antenna Factor
0.1	-79.57415725	29.8
0.2	-73.55355734	29.8
0.3	-68.03173216	27.8
0.4	-64.53295743	26.8
0.5	-61.59475717	25.8
0.6	-59.01113225	24.8
0.7	-56.67219645	23.8
0.8	-55.51235751	23.8
0.9	-53.48930706	22.8
1	-51.47415725	21.7
2	-39.45355734	15.7
3	-33.33173216	13.1
4	-30.33295743	12.6
5	-24.39475717	8.6
6	-27.81113225	13.6
7	-25.47219645	12.6
8	-22.41235751	10.7
9	-24.38930706	13.7
10	-22.97415725	13.2
15	-11.65233207	5.4
20	-8.95355734	5.2
30	-22.33173216	22.1
40	-20.93295743	23.2
45	-15.90990698	19.2
55	-15.26690346	20.3
65	-16.81589012	23.3
75	-16.57293199	24.3
80	-14.11235751	22.4
85	-11.58577874	20.4
90	-10.18930706	19.5
95	-9.719685147	19.5
100	-10.27415725	20.5
150	-10.25233207	24
200	15.54644266	0.7
250	8.88464292	9.3
300	15.46826784	4.3

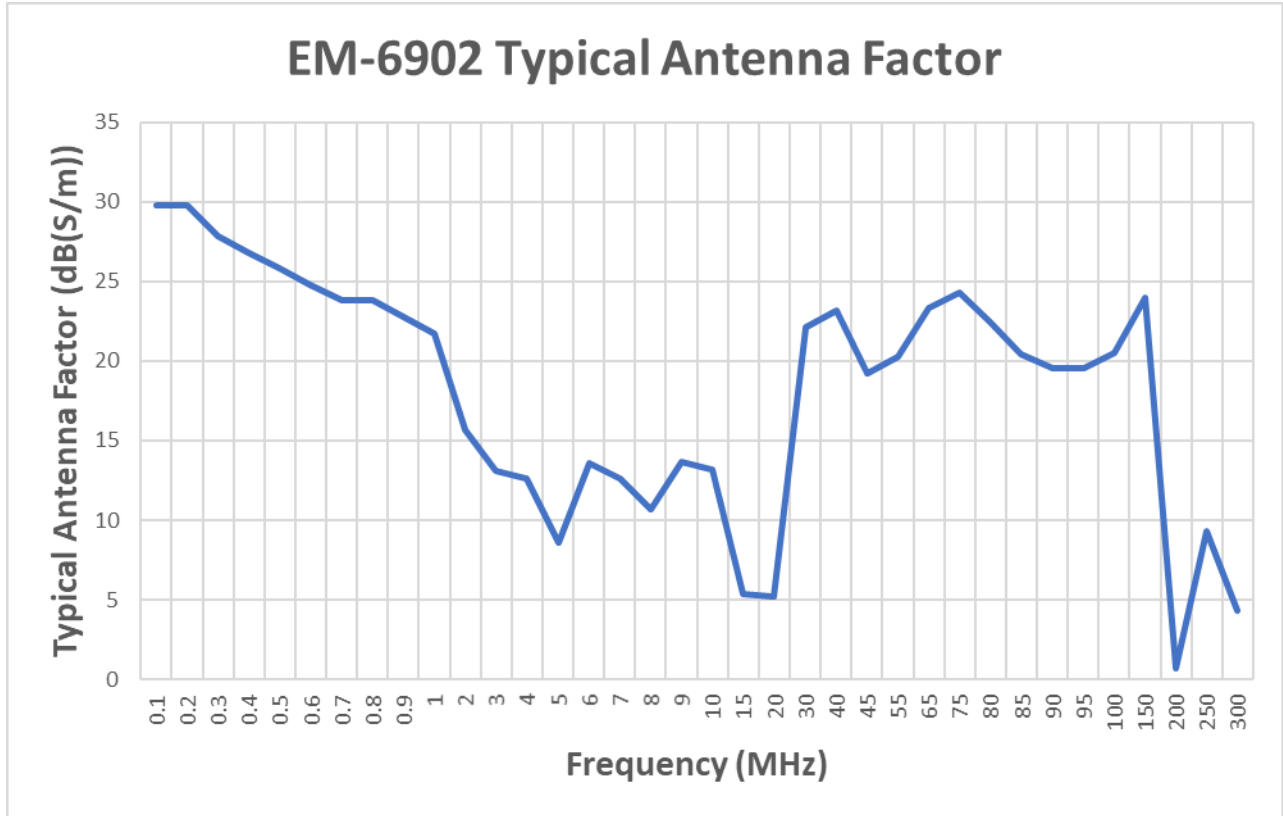


FIGURE 1

EM-6902 TYPICAL ANTENNA FACTOR CHART